

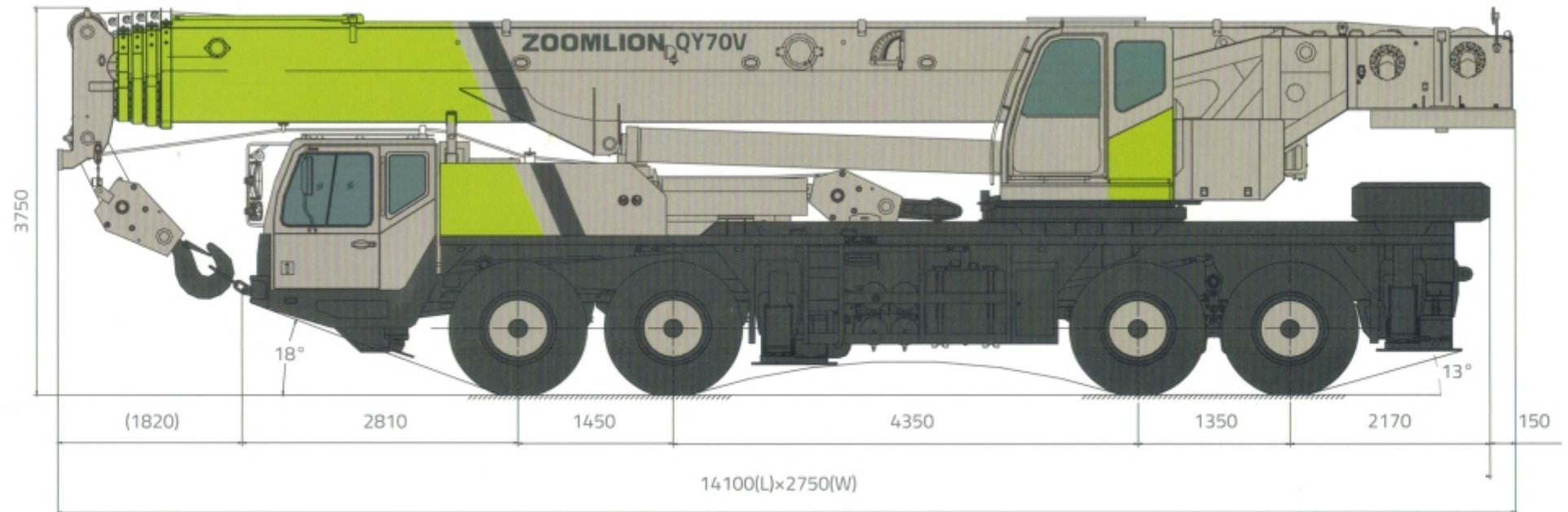
Features

Lifting capacity

Integrates Zoomlion more than 40 years experience in mobile cranes with advanced technology

1. 43 m main boom , two section jibs (9.5m . 16m)
2. Optimized central slewing position increases the lifting capacity of the crane over rear
3. Large outrigger span improves the working stability of the crane greatly
4. Adopt internationally advanced structure analysis and calculation methods to develop the lifting capacity of crane deeply
5. Leading boom manufacturing process.

Overall View

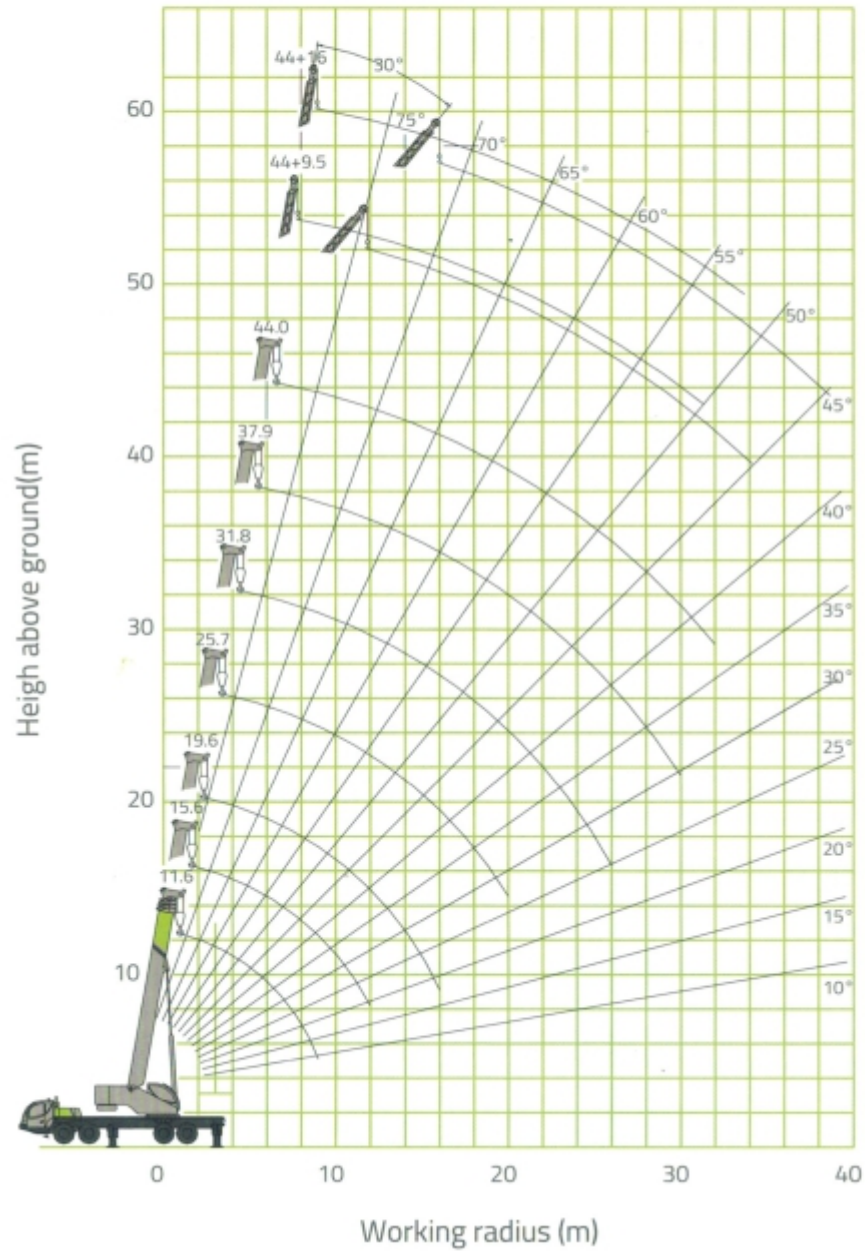


(Unit: Metric mm)

Technical Data

| | Items | Unit | Values | Remarks |
|---------------------|--|-------|--|---|
| Working performance | Max. rated lifting capacity | kg | 70000 | |
| | Max. load moment of basic boom | kN.m | 2352 | |
| | Max. load moment of Max. length boom | kN.m | 1098 | |
| | Max. lifting height of basic boom | m | 12.2 | |
| | Max. lifting height of boom | m | 44.2 | The specifications do not include deflection of boom and jib. |
| | Max. lifting height of jib | m | 60.2 | |
| Working speeds | Max. hoist rope speed (Main winch) | m/min | ≥135 | Drum 4 th layer |
| | Max. hoist rope speed (Auxiliary winch) | m/min | ≥110 | Drum 2 nd layer |
| | Boom derricking up time | s | 57 | |
| | Boom extending time | s | 107 | |
| | Slewing speed | r/min | 1.8 | |
| Driving parameters | Max. driving speed | km/h | 75 | |
| | Max. gradeability | % | 37 | |
| | Min. turning diameter | m | 24 | |
| | Min. ground clearance | mm | 280 | |
| | Oil consumption per hundred kilometers | L | 46 | |
| Mass | Deadweight in driving condition | kg | 45000 | |
| | Complete vehicle kerb mass | kg | 44870 | |
| | Axle load (Front) | kg | 19000 | |
| | Axle load (Rear) | kg | 26000 | |
| Dimensions | Overall dimensions (L x W x H) | mm | 14100x2750x3750 | |
| | Longitudinal distance between outriggers | m | 6.00 | |
| | Transversal distance between outriggers | m | Fully extended 7.60 Half-extended 5.04 | |
| | Slewing radius | mm | 4020 | |
| | Boom length | m | 11.6-44.0 | |
| | Boom angle | ° | -2-80 | |
| | Jib length | m | 9.5, 16 | |
| | Offset | ° | 0, 30 | |

Lifting Height Chart



Rated Lifting Capacity Tables

This crane is provided with 13 sheets of rated lifting capacity tables. The operator should select proper rated lifting capacity referring to resp. Lifting capacity tables according to actual working conditions. For details, please refer to Table 1 to Table 13. The values in column "I" refer to the extendable length of telescoping cylinder I. The values in column "II" refer to 3 times extendable length of telescoping cylinder II, namely, the total extendable length of boom section 3, 4 and 5.

Table 1 Unit: Metric kg

| Working radius (m) | Boom(m) | | | | | | |
|--------------------|--|-------|-------|-------|-------|-------|-------|
| | Outriggers fully extended, over side and over rear Telescopic cylinder I fully extended | | | | | | |
| | 11.6 | 15.6 | 19.6 | 25.7 | 31.8 | 37.9 | 44.0 |
| 3.0 | 70000 | 50000 | 40000 | | | | |
| 3.5 | 64000 | 50000 | 40000 | | | | |
| 4.0 | 56000 | 48000 | 40000 | 28000 | | | |
| 4.5 | 52000 | 44000 | 40000 | 28000 | | | |
| 5.0 | 48000 | 43000 | 38500 | 27000 | | | |
| 5.5 | 43000 | 39000 | 36000 | 26000 | 18000 | | |
| 6.0 | 39000 | 37000 | 34000 | 25000 | 18000 | | |
| 6.5 | 35000 | 33000 | 31500 | 24000 | 18000 | | |
| 7.0 | 30000 | 28700 | 28700 | 23000 | 18000 | 14100 | |
| 7.5 | 26500 | 25000 | 25000 | 22000 | 18000 | 14100 | |
| 8.0 | 23500 | 22500 | 22500 | 21000 | 17500 | 14100 | |
| 9.0 | 18200 | 18200 | 18200 | 18500 | 16000 | 14100 | 10000 |
| 10.0 | | 14700 | 14700 | 15300 | 14500 | 13300 | 10000 |
| 11.0 | | 12200 | 12200 | 12700 | 13000 | 12000 | 9500 |
| 12.0 | | 10000 | 10200 | 11000 | 11500 | 11300 | 9200 |
| 14.0 | | | 7100 | 8200 | 8800 | 9300 | 8200 |
| 16.0 | | | 5300 | 6000 | 6700 | 7200 | 7300 |
| 18.0 | | | | 4700 | 5200 | 5500 | 5900 |
| 20.0 | | | | 3500 | 4000 | 4300 | 4600 |
| 22.0 | | | | | 3100 | 3450 | 3800 |
| 24.0 | | | | | 2300 | 2750 | 3050 |
| 26.0 | | | | | 1700 | 2100 | 2450 |
| 28.0 | | | | | | 1600 | 1950 |
| 30.0 | | | | | | 1200 | 1500 |
| 32.0 | | | | | | | 1200 |
| I | 0 | 4.0 | 8.0 | 8.0 | 8.0 | 8.0 | 8.0 |
| II | 0 | 0 | 0 | 6.1 | 12.2 | 18.3 | 24.4 |
| Reeving | 12 | 9 | 9 | 5 | 5 | 3 | 3 |
| Hook | 70 t main hook | | | | | | |

Table 2

Unit: Metric kg

| Working radius (m) | Boom(m) | | | | | | | | | | |
|--------------------|---|-------|-------|-------|-------|------|---|-------|-------|-------|------|
| | Outriggers fully extended, over side and over rear Telescopic cylinder I intermediately extended | | | | | | Outriggers fully extended, over side and over rear Telescopic cylinder I fully retracted | | | | |
| | 11.6 | 15.6 | 21.7 | 27.8 | 33.9 | 40.0 | 11.6 | 17.7 | 23.8 | 29.9 | 36.0 |
| 3.0 | 70000 | 50000 | | | | | 70000 | 28000 | | | |
| 3.5 | 64000 | 50000 | 28000 | | | | 64000 | 28000 | | | |
| 4.0 | 56000 | 48000 | 28000 | | | | 56000 | 28000 | 17800 | | |
| 4.5 | 52000 | 44000 | 28000 | | | | 52000 | 28000 | 17600 | | |
| 5.0 | 48000 | 43000 | 27000 | 18000 | | | 48000 | 27000 | 17400 | 14000 | |
| 5.5 | 43000 | 39000 | 26000 | 18000 | | | 43000 | 26000 | 17200 | 14000 | |
| 6.0 | 39000 | 37000 | 25000 | 18000 | | | 39000 | 25000 | 17000 | 14000 | |
| 6.5 | 35000 | 33000 | 24000 | 18000 | 14000 | | 35000 | 24000 | 16800 | 14000 | |
| 7.0 | 30000 | 28700 | 23000 | 17500 | 14000 | | 30000 | 23000 | 16500 | 14000 | 9000 |
| 7.5 | 26500 | 25000 | 22000 | 17000 | 14000 | | 26500 | 22000 | 16000 | 14000 | 9000 |
| 8.0 | 23500 | 22500 | 21000 | 16500 | 14000 | 9500 | 23500 | 21000 | 15500 | 13000 | 9000 |
| 9.0 | 18200 | 18200 | 19100 | 16000 | 14000 | 9000 | 18200 | 19800 | 15000 | 12100 | 8800 |
| 10.0 | | 14700 | 15600 | 14500 | 13000 | 8500 | | 16300 | 14500 | 11300 | 8600 |
| 11.0 | | 12200 | 13000 | 13800 | 12000 | 8000 | | 13700 | 14000 | 10500 | 8300 |
| 12.0 | | 10000 | 11000 | 11700 | 11000 | 7700 | | 11700 | 12400 | 9700 | 8000 |
| 14.0 | | | 8200 | 8800 | 9300 | 7200 | | | 9400 | 8600 | 7500 |
| 16.0 | | | 6100 | 6700 | 7200 | 6800 | | | 7400 | 7600 | 6800 |
| 18.0 | | | | 5200 | 5700 | 6000 | | | | 6000 | 6000 |
| 20.0 | | | | 4100 | 4500 | 4800 | | | | 4900 | 5200 |
| 22.0 | | | | 3200 | 3700 | 3900 | | | | 4100 | 4300 |
| 24.0 | | | | | 2900 | 3200 | | | | | 3600 |
| 26.0 | | | | | 2300 | 2600 | | | | | 3000 |
| 28.0 | | | | | 1800 | 2100 | | | | | 2500 |
| 30.0 | | | | | | 1600 | | | | | |
| 32.0 | | | | | | 1300 | | | | | |
| I | 0 | 4.0 | 4.0 | 4.0 | 4.0 | 4.0 | 0 | 0 | 0 | 0 | 0 |
| II | 0 | 0 | 6.1 | 12.2 | 18.3 | 24.4 | 0 | 6.1 | 12.2 | 18.3 | 24.4 |
| Reeving | 12 | 9 | 5 | 5 | 3 | 3 | 12 | 5 | 5 | 3 | 3 |
| Hook | 70 t main hook | | | | | | | | | | |

Table 3

Unit: Metric kg

| Working radius (m) | Boom(m) | | | | | | | | | | | | |
|--------------------|---|-------|-------|-------|-------|-------|-------|--|-------|-------|-------|-------|------|
| | Outriggers intermediately extended, over side and over rear Telescopic cylinder I fully extended | | | | | | | Outriggers intermediately extended, over side and over rear Telescopic cylinder I intermediately extended | | | | | |
| | 11.6 | 15.6 | 19.6 | 25.7 | 31.8 | 37.9 | 44.0 | 11.6 | 15.6 | 21.7 | 27.8 | 33.9 | 40.0 |
| 3.0 | | | 40000 | | | | | 60000 | 50000 | | | | |
| 3.5 | 50000 | 45000 | 40000 | | | | | 50000 | | 28000 | | | |
| 4.0 | 40000 | 40000 | 40000 | 28000 | | | | 40000 | 40000 | 28000 | | | |
| 4.5 | 35000 | 35000 | 35000 | 28000 | | | | 35000 | 35000 | 28000 | | | |
| 5.0 | 32800 | 32000 | 31500 | 27000 | | | | 32800 | 32000 | 27000 | 18000 | | |
| 5.5 | 26500 | 25700 | 25200 | 26000 | 18000 | | | 26500 | 25700 | 26000 | 18000 | | |
| 6.0 | 21900 | 21200 | 20800 | 22200 | 18000 | | | 21900 | 21200 | 22900 | 18000 | | |
| 6.5 | 18500 | 17800 | 17500 | 18800 | 18000 | | | 18500 | 17800 | 19400 | 17500 | 14000 | |
| 7.0 | 15800 | 15200 | 14900 | 16200 | 17000 | 14000 | | 15800 | 15200 | 16700 | 17000 | 14000 | |
| 7.5 | 13700 | 13100 | 12800 | 14000 | 14800 | 14000 | | 13700 | 13100 | 14600 | 15400 | 14000 | |
| 8.0 | 12000 | 11400 | 11100 | 12300 | 13000 | 13500 | | 12000 | 11400 | 12800 | 13600 | 13500 | 9500 |
| 9.0 | 9300 | 8800 | 8500 | 9700 | 10400 | 10900 | 10000 | 9300 | 8800 | 10200 | 10800 | 11300 | 9000 |
| 10.0 | | 6900 | 6600 | 7700 | 8400 | 8800 | 9200 | | 6900 | 8200 | 8800 | 9300 | 8500 |
| 11.0 | | 5400 | 5100 | 6200 | 6800 | 7200 | 7600 | | 5400 | 6700 | 7300 | 7700 | 8100 |
| 12.0 | | 4200 | 4000 | 5000 | 5600 | 6000 | 6400 | | 4200 | 5500 | 6100 | 6500 | 6800 |
| 14.0 | | | 2300 | 3300 | 3900 | 4300 | 4600 | | | 3700 | 4300 | 4700 | 5000 |
| 16.0 | | | | 2000 | 2600 | 3000 | 3300 | | | | 3000 | 3400 | 3700 |
| 18.0 | | | | | 1700 | 2100 | 2300 | | | | | 2500 | 2800 |
| 20.0 | | | | | 1000 | 1400 | 1600 | | | | | 1800 | 2000 |
| 22.0 | | | | | | 900 | 1100 | | | | | | 1400 |
| I | 0 | 4.0 | 8.0 | 8.0 | 8.0 | 8.0 | 8.0 | 0 | 4.0 | 4.0 | 4.0 | 4.0 | 4.0 |
| II | 0 | 0 | 0 | 6.1 | 12.2 | 18.3 | 24.4 | 0 | 0 | 6.1 | 12.2 | 18.3 | 24.4 |
| Reeving | 12 | 9 | 9 | 5 | 5 | 3 | 3 | 12 | 9 | 5 | 5 | 3 | 3 |
| Hook | 70t main hook | | | | | | | | | | | | |

Table 4

Unit: Metric kg

| Working radius (m) | Boom(m) | | | | |
|--------------------|--|-------|-------|-------|------|
| | Outriggers intermediately extended, over side and over rear Telescopic cylinder I fully retracted | | | | |
| | 11.6 | 17.7 | 23.8 | 29.9 | 36.0 |
| 3.0 | 60000 | 28000 | | | |
| 3.5 | 50000 | 28000 | | | |
| 4.0 | 40000 | 28000 | 17800 | | |
| 4.5 | 35000 | 28000 | 17600 | | |
| 5.0 | 32800 | 27000 | 17400 | 14000 | |
| 5.5 | 26500 | 26000 | 17200 | 14000 | |
| 6.0 | 21900 | 23800 | 17000 | 14000 | |
| 6.5 | 18500 | 20200 | 16800 | 14000 | |
| 7.0 | 15800 | 17500 | 16500 | 14000 | 9000 |
| 7.5 | 13700 | 15300 | 16000 | 14000 | 9000 |
| 8.0 | 12000 | 13500 | 14200 | 13000 | 9000 |
| 9.0 | 9300 | 10800 | 11400 | 11800 | 8800 |
| 10.0 | | 8800 | 9400 | 9800 | 8600 |
| 11.0 | | 7200 | 7800 | 8200 | 8300 |
| 12.0 | | 6000 | 6600 | 7000 | 7200 |
| 14.0 | | | 4800 | 5100 | 5300 |
| 16.0 | | | 3500 | 3800 | 4000 |
| 18.0 | | | | 2900 | 3100 |
| 20.0 | | | | 2200 | 2400 |
| 22.0 | | | | 1600 | 1800 |
| 24.0 | | | | | 1300 |
| I | 0 | 0 | 0 | 0 | 0 |
| II | 0 | 6.1 | 12.2 | 18.3 | 24.4 |
| Reeving | 12 | 5 | 5 | 3 | 3 |
| Hook | 70 t main hook | | | | |

| Boom angle (°) | Boom+Fly jib (m) | | | |
|----------------|--|------|-----------|------|
| | Support leg fully extended, sidewise and rearside operations | | | |
| | 44.0+9.5 | | 44.0+16.0 | |
| | 0° | 30° | 0° | 30° |
| 80° | 5000 | 3000 | 3000 | 1300 |
| 78° | 4700 | 2850 | 2700 | 1200 |
| 76° | 4400 | 2600 | 2400 | 1150 |
| 74° | 4100 | 2450 | 2100 | 1100 |
| 72° | 3800 | 2300 | 1850 | 1050 |
| 70° | 3500 | 2200 | 1700 | 1000 |
| 68° | 3200 | 2100 | 1600 | 970 |
| 66° | 2800 | 2000 | 1500 | 940 |
| 64° | 2400 | 1900 | 1400 | 910 |
| 62° | 2100 | 1800 | 1300 | 880 |
| 60° | 1850 | 1650 | 1200 | 850 |
| 58° | 1600 | 1350 | 1100 | 800 |
| 56° | 1300 | 1150 | 1000 | 750 |
| 54° | 1000 | 900 | 800 | |
| 52° | 800 | | | |
| Reeving | 1 | | | |
| Hook | 5 t auxiliary hook | | | |

Table 5

Unit: Metric kg

| Working radius (m) | Boom(m) | | | | | | |
|--------------------|--|-------|-------|-------|-------|-------|-------|
| | Outriggers fully extended, over side and over rear, with 2 t movable counterweight Telescopic cylinder I fully extended | | | | | | |
| | 11.6 | 15.6 | 19.6 | 25.7 | 31.8 | 37.9 | 44.0 |
| 3.0 | 70000 | 50000 | 40000 | | | | |
| 3.5 | 64000 | 50000 | 40000 | | | | |
| 4.0 | 56000 | 48000 | 40000 | 28000 | | | |
| 4.5 | 52000 | 44000 | 40000 | 28000 | | | |
| 5.0 | 48000 | 43000 | 39000 | 27600 | | | |
| 5.5 | 43000 | 39000 | 36000 | 26000 | 18000 | | |
| 6.0 | 39000 | 37000 | 34200 | 25500 | 18000 | | |
| 6.5 | 35000 | 33000 | 31500 | 24000 | 18000 | | |
| 7.0 | 30000 | 29500 | 29000 | 23500 | 18000 | 14000 | |
| 7.5 | 26500 | 25000 | 25000 | 22500 | 18000 | 14000 | |
| 8.0 | 24000 | 23400 | 23300 | 21500 | 17500 | 14000 | |
| 9.0 | 18900 | 18700 | 18500 | 19100 | 16000 | 14000 | 10000 |
| 10.0 | | 15200 | 15100 | 16300 | 14500 | 13300 | 10000 |
| 11.0 | | 12200 | 12200 | 13200 | 13000 | 12000 | 9600 |
| 12.0 | | 10500 | 10400 | 11500 | 12200 | 11300 | 9400 |
| 14.0 | | | 7400 | 8500 | 9200 | 9600 | 8300 |
| 16.0 | | | 5300 | 6400 | 7100 | 7400 | 7500 |
| 18.0 | | | | 4800 | 5500 | 6000 | 6100 |
| 20.0 | | | | 3650 | 4300 | 4800 | 4900 |
| 22.0 | | | | | 3350 | 3800 | 3900 |
| 24.0 | | | | | 2650 | 3100 | 3250 |
| 26.0 | | | | | 2000 | 2400 | 2700 |
| 28.0 | | | | | | 1900 | 2150 |
| 30.0 | | | | | | 1450 | 1700 |
| 32.0 | | | | | | | 1350 |
| I | 0 | 4.0 | 8.0 | 8.0 | 8.0 | 8.0 | 8.0 |
| II | 0 | 0 | 0 | 6.1 | 12.2 | 18.3 | 24.4 |
| Reeving | 12 | 9 | 9 | 5 | 5 | 3 | 3 |
| Hook | 70t main hook | | | | | | |

Table 6

Unit: Metric kg

| Working radius (m) | Boom(m) | | | | | | | | | | | |
|--------------------|---|-------|-------|-------|-------|------|---|-------|-------|-------|------|--|
| | Outriggers fully extended, over side and over rear, with 2 t movable counterweight Telescopic cylinder I intermediately extended | | | | | | Outriggers fully extended, over side and over rear, with 2 t movable counterweight Telescopic cylinder I fully retracted | | | | | |
| | 11.6 | 15.6 | 21.7 | 27.8 | 33.9 | 40.0 | 11.6 | 17.7 | 23.8 | 29.9 | 36.0 | |
| 3.0 | 70000 | 50000 | | | | | 70000 | 28000 | | | | |
| 3.5 | 64000 | 50000 | 28000 | | | | 64000 | 28000 | | | | |
| 4.0 | 56000 | 48000 | 28000 | | | | 56000 | 28000 | 17800 | | | |
| 4.5 | 52000 | 44000 | 28000 | | | | 52000 | 28000 | 17600 | | | |
| 5.0 | 48000 | 43000 | 27000 | 18000 | | | 48000 | 27000 | 17400 | 14000 | | |
| 5.5 | 43000 | 39000 | 26000 | 18000 | | | 43000 | 26000 | 17200 | 14000 | | |
| 6.0 | 39000 | 37000 | 25000 | 18000 | | | 39000 | 25000 | 17000 | 14000 | | |
| 6.5 | 35000 | 33000 | 24000 | 18000 | 14000 | | 35000 | 24000 | 16800 | 14000 | | |
| 7.0 | 30000 | 29500 | 23000 | 17500 | 14000 | | 30000 | 23000 | 16500 | 14000 | 9000 | |
| 7.5 | 26500 | 25000 | 22000 | 17000 | 14000 | | 26500 | 22000 | 16000 | 14000 | 9000 | |
| 8.0 | 24000 | 23400 | 21000 | 16500 | 14000 | 9500 | 24000 | 21000 | 15500 | 13000 | 9000 | |
| 9.0 | 18900 | 18700 | 19500 | 16000 | 14000 | 9000 | 18900 | 20000 | 15000 | 12100 | 8800 | |
| 10.0 | | 15200 | 16500 | 14500 | 13000 | 8500 | | 17000 | 14500 | 11300 | 8600 | |
| 11.0 | | 12200 | 13300 | 13800 | 12000 | 8000 | | 13800 | 14000 | 10500 | 8300 | |
| 12.0 | | 10500 | 11600 | 12300 | 11000 | 7700 | | 12000 | 13000 | 9700 | 8000 | |
| 14.0 | | | 8600 | 9300 | 9300 | 7300 | | | 10000 | 8600 | 7500 | |
| 16.0 | | | 6500 | 7200 | 7600 | 6900 | | | 7900 | 7600 | 6800 | |
| 18.0 | | | | 5600 | 6200 | 6200 | | | | 6500 | 6000 | |
| 20.0 | | | | 4400 | 5000 | 5000 | | | | 5400 | 5200 | |
| 22.0 | | | | 3450 | 4000 | 4100 | | | | 4400 | 4400 | |
| 24.0 | | | | | 3300 | 3300 | | | | | 3700 | |
| 26.0 | | | | | 2650 | 2800 | | | | | 3200 | |
| 28.0 | | | | | 2100 | 2250 | | | | | 2650 | |
| 30.0 | | | | | | 1800 | | | | | | |
| 32.0 | | | | | | 1450 | | | | | | |
| I | 0 | 4.0 | 4.0 | 4.0 | 4.0 | 4.0 | 0 | 0 | 0 | 0 | 0 | |
| II | 0 | 0 | 6.1 | 12.2 | 18.3 | 24.4 | 0 | 6.1 | 12.2 | 18.3 | 24.4 | |
| Reeving | 12 | 9 | 5 | 5 | 3 | 3 | 12 | 5 | 5 | 3 | 3 | |
| Hook | 70t main hook | | | | | | | | | | | |

Table 7

Unit: Metric kg

| Working radius (m) | Boom(m) | | | | | | | | | | | | |
|--------------------|--|-------|-------|-------|-------|-------|-------|---|-------|-------|-------|-------|------|
| | Outriggers intermediately extended, over side and over rear, with 2 t movable counterweight Telescopic cylinder I fully extended | | | | | | | Outriggers intermediately extended, over side and over rear, with 2 t movable counterweight Telescopic cylinder I intermediately extended | | | | | |
| | 11.6 | 15.6 | 19.6 | 25.7 | 31.8 | 37.9 | 44.0 | 11.6 | 15.6 | 21.7 | 27.8 | 33.9 | 40.0 |
| 3.0 | | | 40000 | | | | | 60000 | 50000 | | | | |
| 3.5 | 50000 | 45000 | 40000 | | | | | 50000 | | 28000 | | | |
| 4.0 | 40000 | 40000 | 40000 | 28000 | | | | 40000 | 40000 | 28000 | | | |
| 4.5 | 35000 | 35000 | 35000 | 28000 | | | | 35000 | 35000 | 28000 | | | |
| 5.0 | 32800 | 32000 | 31500 | 27000 | | | | 32800 | 32000 | 27000 | 18000 | | |
| 5.5 | 26500 | 25700 | 25200 | 26000 | 18000 | | | 26500 | 25700 | 26000 | 18000 | | |
| 6.0 | 21900 | 21200 | 20800 | 22200 | 18000 | | | 21900 | 21200 | 22900 | 18000 | | |
| 6.5 | 18500 | 17800 | 17500 | 18800 | 18000 | | | 18500 | 17800 | 19400 | 17500 | 14000 | |
| 7.0 | 17000 | 15200 | 14900 | 16200 | 17000 | 14000 | | 17000 | 15200 | 16700 | 17000 | 14000 | |
| 7.5 | 14000 | 13100 | 12800 | 14000 | 14800 | 14000 | | 14000 | 13100 | 14600 | 15400 | 14000 | |
| 8.0 | 13000 | 12700 | 12300 | 13500 | 13000 | 13500 | | 13000 | 12700 | 13800 | 13600 | 13500 | 9500 |
| 9.0 | 10000 | 9900 | 9700 | 10800 | 10400 | 12000 | 10000 | 10000 | 9900 | 11200 | 10800 | 12300 | 9000 |
| 10.0 | | 7900 | 7600 | 8700 | 9500 | 9900 | 9200 | | 7900 | 9200 | 9800 | 10000 | 8500 |
| 11.0 | | 5900 | 5800 | 6800 | 7400 | 8000 | 7600 | | 5900 | 7500 | 8100 | 8500 | 8100 |
| 12.0 | | 5000 | 4800 | 5900 | 6500 | 7000 | 7300 | | 5000 | 6300 | 6900 | 7300 | 7600 |
| 14.0 | | | 3000 | 4000 | 4700 | 5100 | 5400 | | | 4300 | 4900 | 5300 | 5600 |
| 16.0 | | | | 2600 | 3400 | 3800 | 4100 | | | | 3500 | 3900 | 4500 |
| 18.0 | | | | | 2400 | 2800 | 3100 | | | | | 3000 | 3300 |
| 20.0 | | | | | 1700 | 2100 | 2300 | | | | | 2200 | 2400 |
| 22.0 | | | | | | 1500 | 1700 | | | | | | 1800 |
| I | 0 | 4.0 | 8.0 | 8.0 | 8.0 | 8.0 | 8.0 | 0 | 4.0 | 4.0 | 4.0 | 4.0 | 4.0 |
| II | 0 | 0 | 0 | 6.1 | 12.2 | 18.3 | 24.4 | 0 | 0 | 6.1 | 12.2 | 18.3 | 24.4 |
| Reeving | 12 | 9 | 9 | 5 | 5 | 3 | 3 | 12 | 9 | 5 | 5 | 3 | 3 |
| Hook | 70t main hook | | | | | | | | | | | | |

Table 8

Unit: Metric kg

| Working radius (m) | Boom(m) | | | | |
|--------------------|---|-------|-------|-------|------|
| | Outriggers intermediately extended, over side and over rear, with 2 t movable counterweight Telescopic cylinder I fully retracted | | | | |
| | 11.6 | 17.7 | 23.8 | 29.9 | 36.0 |
| 3.0 | 60000 | 28000 | | | |
| 3.5 | 50000 | 28000 | | | |
| 4.0 | 40000 | 28000 | 17800 | | |
| 4.5 | 35000 | 28000 | 17600 | | |
| 5.0 | 32800 | 27000 | 17400 | 14000 | |
| 5.5 | 26500 | 26000 | 17200 | 14000 | |
| 6.0 | 21900 | 23800 | 17000 | 14000 | |
| 6.5 | 18500 | 20200 | 16800 | 14000 | |
| 7.0 | 17000 | 17500 | 16500 | 14000 | 9000 |
| 7.5 | 14000 | 15300 | 16000 | 14000 | 9000 |
| 8.0 | 13000 | 14500 | 14200 | 13000 | 9000 |
| 9.0 | 10000 | 11800 | 11400 | 12000 | 8800 |
| 10.0 | | 9800 | 10400 | 10500 | 8600 |
| 11.0 | | 8000 | 8800 | 8800 | 8300 |
| 12.0 | | 6800 | 7400 | 7800 | 8000 |
| 14.0 | | | 5400 | 5700 | 5900 |
| 16.0 | | | 4000 | 4300 | 4500 |
| 18.0 | | | | 3400 | 3600 |
| 20.0 | | | | 2600 | 2800 |
| 22.0 | | | | 2000 | 2200 |
| 24.0 | | | | | 1700 |
| I | 0 | 0 | 0 | 0 | 0 |
| II | 0 | 6.1 | 12.2 | 18.3 | 24.4 |
| Reeving | 12 | 5 | 5 | 3 | 3 |
| Hook | 70t main hook | | | | |