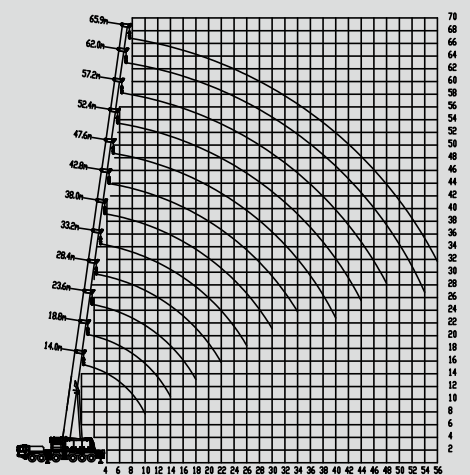
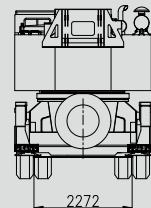
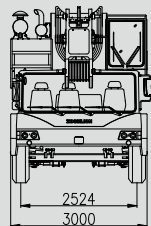
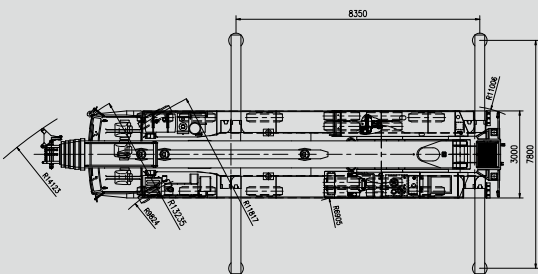
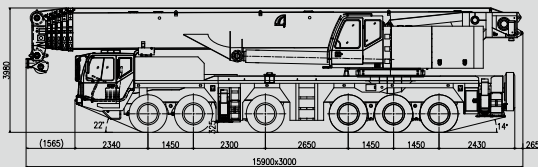


NEW ERA  
NEW IMAGE

# QY130V633.2

## TRUCK CRANE



The Power of China, The legend of world.

**ZOOMLION**

# QY130V633.2 FULLY HYDRAULIC TRUCK CRANE SPECIFICATION

## CRANE

Description: Truck crane with maximum lifting capacity 130 ton  
Model: QY130V633.2

Specification	
Maximum rated lifting capacity	33.2 m boom 65 t × 5 m (Parts of line: 8)
	38 m boom 50 t × 5.5 m (Parts of line: 6)
	42.8 m boom 40 t × 7 m (Parts of line: 5)
	47.6 m boom 30 t × 9 m (Parts of line: 4)
	52.4 m boom 23 t × 10 m (Parts of line: 3)
	57.2 m boom 18 t × 11 m (Parts of line: 3)
	62 m boom 15 t × 12 m (Parts of line: 2)
	65.9 m boom 13 t × 14 m (Parts of line: 2)
Max. rated lifting capacity	130000 kg
Max. load moment of basic boom	5056 kN.m
Max. load moment of main boom (fully extended)	2328 kN.m
Maximum lifting height	66.6 m (boom)
Hoisting line speed	Main winch 115 m/min
	Aux. winch 75 m/min
Boom derricking angle	-1.5° - 82°
Boom derrick up time	85 s
Boom extending time	870 s
Boom slewing time	0 - 1.5 r/min
Equipment and structure	
Boom type	Oviform-type, 6-section hydraulically telescopic type
	Boom length: 14 m – 65.9 m
Jib type	2 lattice sections, 2 jib extensions
	Jib length: 11 m, 18.6 m, 26.6 m and 34.6 m (with one jib extension), 34.6 m (with two jib extensions)
Boom extension/ retraction type	Single cylinder telescoping system with hydraulic interlocking device
Boom derricking equipment	Double acting single piston rod
	The boom is derricked down under the action of its gravity, with protective measures
Winch system (Main & Aux. winches)	Driven by hydraulic motor through planetary reducer.
	The main winch is driven by a variable motor. The auxiliary winch is driven by a constant motor.
Slewing equipment	Two slewing gears, consisting of planetary reducer and hydraulic motor
	With big output torque, stable drive performance and excellent micro-positioning performance
Slewing bearing	Three-roller external tooth type
Counterweights	5 moveable counterweight plates
	Weights: 14 ton, 10 ton, 8 ton and 2 of 6.5 ton
	Weight variants: 0 ton, 10 ton, 24 ton, 32 ton, 45 ton
Wire rope for hoisting	Main winch Diameter: φ19 mm × length: 350 m
	Aux. winch Diameter: φ19 mm × length: 220 m
Outriggers	Type H-beam type, 2-section sliding beams.
	Spread 7800 mm × 8350 mm (fully extended)
	L×W 5300 mm × 8350 mm (Intermediately extended)
Hydraulic equipment	
Oil pump	Variable type + gear type
Hydraulic motor	Hoisting motor Axial plunger type
	Slewing motor Axial plunger type
Cylinder	Double acting type
Oil reservoir capacity	1020 L
Safety devices	
Load moment limiter, boom angle indicator, hoisting limit switch, lowering limit switch, hook latch, two-way hydraulic lock, balance valve, relief valve, slewing lockout device	
Standard equipment	
Jib (2-section lattice jib), hooks (90 ton, 55 ton and 7 ton), auxiliary hoist gear	
Optional equipment	
Jib extension, 130 ton, 110 ton and 25 ton hooks, main winch monitor, rotating beacon	

## CHASSIS

Model: ZLJ5664JQZ

Specification	
Maximum driving speed	75 km/h
Gradeability	40%
Minimum turning diameter	24 m
Min. ground clearance	325 mm
Oil consumption /100 km	80 L
General dimensions & G.V.W.	
Overall length	15900 mm
Overall width	3000 mm
Overall height	3980 mm
Wheel base	2524/2524/2524/2272/2272/2524 mm
Axle load	10000/10000/10000/13000/13000/10000 kg
Deadweight in driving condition	66000 kg
Engine	
Model	OM502LAIII/3
Type	V-type 8-cylinder, turbo-charged and intercooled (air to air), electronic fuel injection diesel
Displacement	15.93 L
Max. power	390 kW/1800 r/min
Max. torque	2400 N.m /1080 r/min
Equipment and structure	
Drive system	12 × 6
Clutch	Single dry plate
Transmission	Automatic transmission type (mechanically controlled)
Number of speeds	12 forward & 2 reverse speeds
Axles	1, 2, 3 and 6: Steer
	3, 5 and 6: Drive
Suspension	Front Longitudinal leaf spring + balance beam
	Rear Longitudinal leaf spring + balance beam
Brake	Service 2 circuit air brake, acting on 12 hubs
	Parking Spring loaded brake, acting on 8 hubs
	Auxiliary Consisting of compression-release brake and exhaust brake
Steering	Integral circulating ball type
Tire size	Front 12.00R24
	Rear 12.00R24
Fuel tank capacity	400 L
Seating capacity	3 persons
Battery	(12V-N200) × 2
Standard equipment	
1 set of spare tire assy.	

www.zoomlion.com