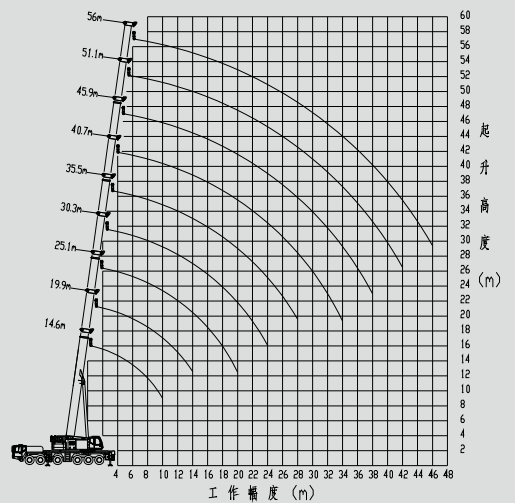
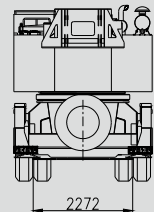
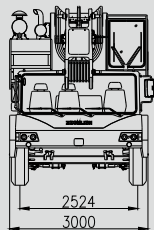
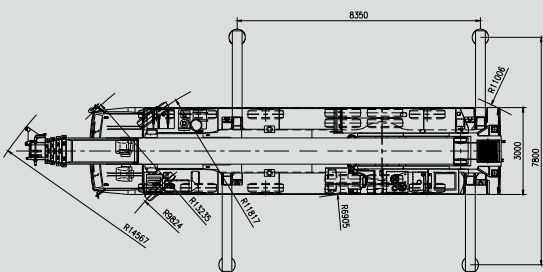
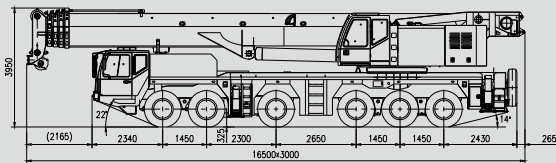


NEW ERA
NEW IMAGE

QY100V532

TRUCK CRANE



The Power of China, The legend of world.

ZOOMLION

QY100V532 FULLY HYDRAULIC TRUCK CRANE SPECIFICATION

CRANE

Description: Truck crane with maximum lifting capacity 100 ton
Model: QY100V532

Specification	
Maximum rated lifting capacity	30.3 m boom 55000 kg × 4.5 m (Parts of line: 8)
	35.5 m boom 46000 kg × 5.5 m (Parts of line: 6)
	40.7 m boom 37000 kg × 6.5 m (Parts of line: 5)
	45.9 m boom 30000 kg × 8.0 m (Parts of line: 4)
	51.1 m boom 23000 kg × 10.0 m (Parts of line: 3)
	56.0 m boom 16000 kg × 11.0 m (Parts of line: 2)
Max. rated lifting capacity	100000 kg
Max. load moment of basic boom	4312 kN.m
Max. load moment of main boom (fully extended)	2371 kN.m
Maximum lifting height	56.9 m (boom)
Hoisting line speed	Main winch 115 m/min
	Aux. winch 75 m/min
Boom derricking angle	-1.5° - 82°
Boom derrick up time	85 s
Boom extending time	150 s
Boom slewing time	0 - 1.6 r/min
Equipment and structure	
Boom type	U-type, 5-section hydraulically telescopic type
	Boom length: 14.6 m – 56 m
Jib type	2 lattice sections and 1 jib extension
	Jib length: 11 m, 18.6 m and 26.6 m (with jib extension)
Boom extension/ retraction type	Synchronized telescoping system with two telescoping cylinders and two sets of wire ropes
Boom derricking equipment	Double acting single piston rod
	The boom is derricked down under the action of its gravity, with protective measures
Winch system (Main & Aux. winches)	Driven by hydraulic motor through planetary gear reducer. Models of main winch and auxiliary winch are different. The winch system has the functions below: protective measures to prevent the lowering of 2nd hoist movement, high / low speed selection and high speed movement with light load and low speed movement with heavy load.
Slewing equipment	Two slewing gears, consisting of three-stage planetary reducer and plunger hydraulic motor, closed system controllable. With big output torque, stable drive performance and excellent micro-positioning performance
Slewing bearing	Double-roller external tooth type, with superior load bearing capacity and stable drive performance
Slewing bearing	5 moveable counterweight plates
	Weights: 14 ton, 10 ton, 8 ton and 2 of 2 ton
	Weight variants: 0 ton, 10 ton, 24 ton, 32 ton, 36 ton
Wire rope for hoisting	Main winch Diameter: φ19 mm × length: 300 m
	Aux. winch Diameter: φ19 mm × length: 190 m
Outriggers	Type H-beam type, 2-section sliding beams.
	Spread 7800 mm × 8350 mm (fully extended)
	L×W 5300 mm × 8350 mm (Intermediately extended)
Hydraulic equipment	
Oil pump	Variable type
Hydraulic motor	Hoisting motor Axial plunger type
	Slewing motor Axial plunger type
Cylinder	Double acting type
Oil reservoir capacity	1330 L
Safety devices	
Load moment limiter, boom angle indicator, hoisting limit switch, lowering limit switch, two-way hydraulic lock, relief valve, slewing lockout device	
Standard equipment	
Jib (2-section lattice jib), hooks (90 ton, 55 ton and 7 ton), auxiliary hoist gear	
Optional equipment	
Jib extension, 110 ton and 25 ton hooks, main winch monitor, rotating beacon	

CHASSIS

Model: ZLJ5664

Specification	
Maximum driving speed	75 km/h
Gradeability	40%
Minimum turning diameter	24 m
Min. ground clearance	325 mm
Oil consumption /100 km	85 L
General dimensions & G.V.W.	
Overall length	16500 mm
Overall width	3000 mm
Overall height	3950 mm
Wheel base	2524/2524/2524/2272/2272/2524 mm
Axle load	10000/10000/10000/13000/13000/10000 kg
Deadweight in driving condition	66000 kg
Engine	
Model	OMS02LAIII/3
Type	V-type 8-cylinder, turbo-charged and intercooled (air to air), electronic fuel injection diesel
Displacement	15.93 L
Max. power	390 KW/1800 r/min
Max. torque	2400 N.m /1080 r/min
Equipment and structure	
Drive system	12 × 6
Clutch	Single dry plate
Transmission	Automatic transmission type (mechanically controlled)
Number of speeds	12 forward & 2 reverse speeds
Axles	1, 2, 3 and 6: Steer
	3, 5 and 6: Drive
Suspension	Front Leaf spring + balance beam
	Rear Leaf spring + balance beam
Brake	Service 2 circuit air brake, acting on 12 hubs
	Parking Spring loaded brake, acting on 8 hubs
	Auxiliary Consisting of compression-release brake and exhaust brake
Steering	Integral circulating ball type
Tire size	Front 12.00R24
	Rear 12.00R24
Fuel tank capacity	400 L
Seating capacity	3 persons
Battery	(12V-N200) × 2
Standard equipment	
1 set of spare tire assy.	

www.zoomlion.com